



Everyone is invited to
a free public concert event:
Musical Exploration

Saturday, November 9th
2:00-3:00 pm at the Thompson Center on Lourdes

Enjoy music featured by:

- The On a Positive Note chorus will sing
- The Jukebox Quartet of Fox Valleyaires will sing songs of the 50s
- Residents of several memory care communities will sing along with John McFadden and his ukulele

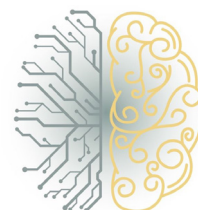
There will be a display of artwork with musical themes, created by memory cafe participants and memory care residents.

Refreshments will be served after the show.

Contact Dana Anderson at Primrose Retirement Community at (608) 260-0550 for more information.



OUTAGAMIE COUNTY SHORT-TERM REHABILITATION AND LONG-TERM CARE COMMUNITY



PASSAGES

EDUCATION • ENGAGEMENT • EXPERIENCE

St. Paul Elder Services, Inc.

